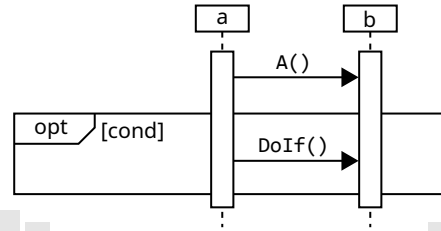


In a sequence diagram,

how are **if statements** drawn?

UML

What is a interaction frame with an **opt** operator?



UML

In a sequence diagram,

what are lifelines?

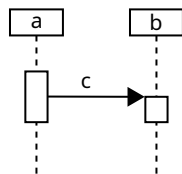
UML

In a sequence diagram,

how are **messages** drawn?

UML

What is the solid line arrow with the name (c) above it?



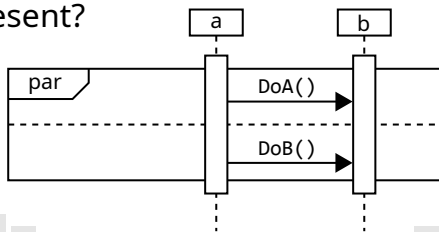
UML

In a sequence diagram,

how is **parallelism** drawn?

UML

What does a **par** operator in an interaction frame with a dotted line represent?



UML

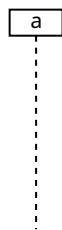
In a sequence diagram,

how are **participants** drawn?

UML

In a sequence diagram,

What is a named box with a dotted vertical line called?



UML

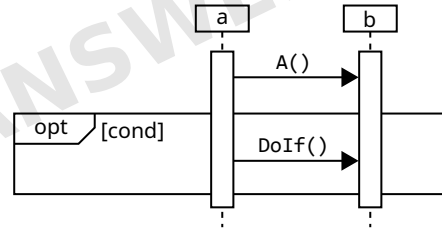
In a sequence diagram,

how are **return values** drawn?

UML

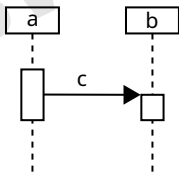
A conditional
(aka, **if statement**)

Use an interaction frame with the **opt** operator.
Separate branches with dotted lines.
Supply if condition with [] statements.



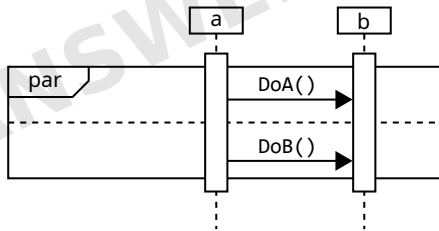
A solid line, filled arrow.

From the caller to the recipient.
With the msg name above the arrow.



Dashed lines stemming
from a participant.

Use an interaction frame with the **par** operator.
Separate branches with dotted lines.



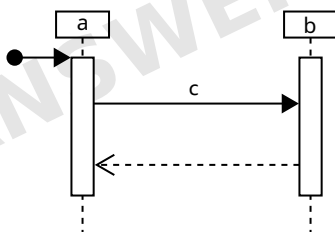
A "message"

As a box with its
name inside, and
a dashed line
stemmed below.



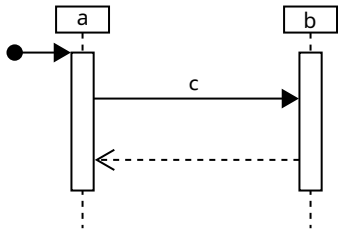
Parallelism

Dashed lines, open arrow.



A "participant"

What is the dashed arrow?



UML

In a sequence diagram,

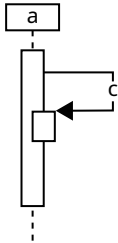
how are **self-calls** drawn?

UML

In a sequence diagram,

how are temporary created objects drawn?

UML



What is c?

UML

In a sequence diagram,

how is **branching** drawn?

UML

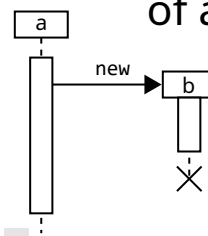
What is a sequence diagram?

UML

In a sequence diagram,
how is the **self-deletion** of temporary created objects drawn?

UML

What does the X at the end of a lifeline mean?

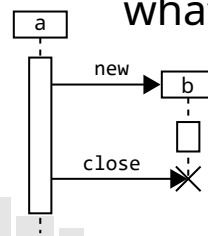


UML

In a sequence diagram,
how is the **deletion** of temporary created objects drawn?

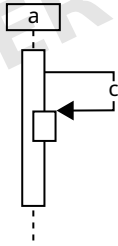
UML

For a temporary object,
what does a message to an X mean?



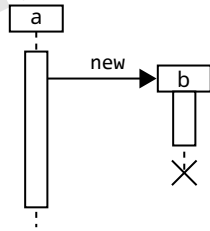
UML

A call arrow pointing to itself.



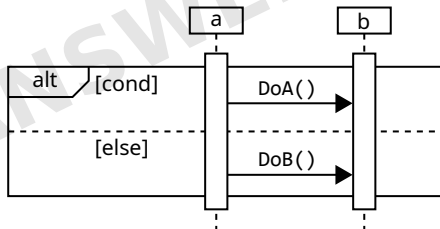
A return value.

An arrow points to the title upon creation. And the lifeline ends with an X.



A self-call

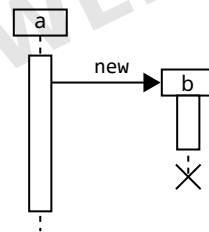
Use an interaction frame with the **alt** operator. Separate branches with dotted lines. Supply if condition with [] statements.



A diagram showing the order of how multiple participants communicate to perform a task or respond to an event.

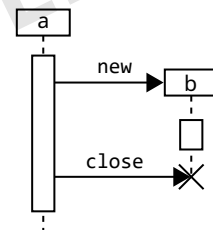
The **self-deletion** of the temporary object.

Lifeline extends to the end with an X.



Deletion of a temporary object.

A participant sends a close message to the X at the end of the lifeline.



In a sequence diagram,

how is the duration of participation shown?

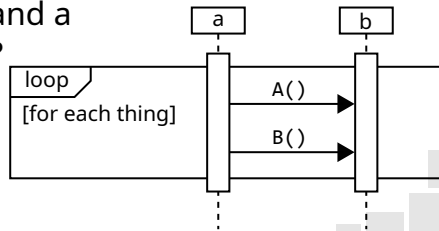
UML

In a sequence diagram,

how are **for loops** drawn?

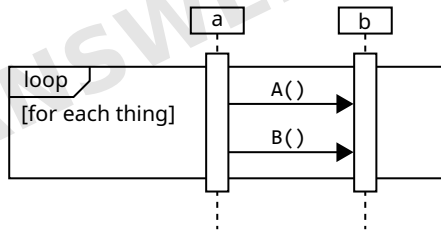
UML

What is an interaction frame with a **loop** operator and a condition?



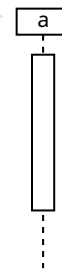
UML

Use an interaction frame with the loop operator.
Separate branches with dotted lines.
Supply loop condition in [] statements.



With activation boxes.

A hollow box on the lifeline for the bounds where relevant.



A for loop