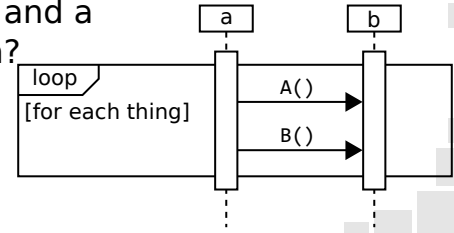


In a sequence diagram,
how are **for loops** drawn?

UML

What is an interaction frame with a **loop** operator and a condition?

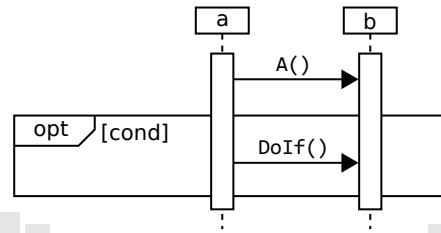


UML

In a sequence diagram,
how are **if statements** drawn?

UML

What is a interaction frame with an **opt** operator?



UML

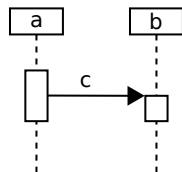
In a sequence diagram,
what are lifelines?

UML

In a sequence diagram,
how are **messages** drawn?

UML

What is the solid line arrow with the name (c) above it?

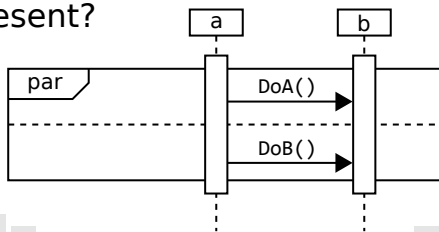


UML

In a sequence diagram,
how is **parallelism** drawn?

UML

What does a **par** operator in an interaction frame with a dotted line represent?



UML

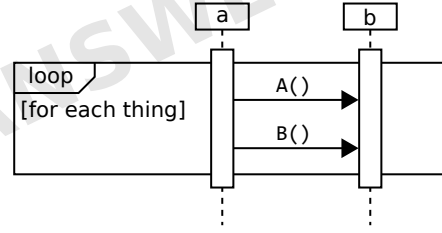
In a sequence diagram,
how are **participants** drawn?

UML

ANSWER

A for loop

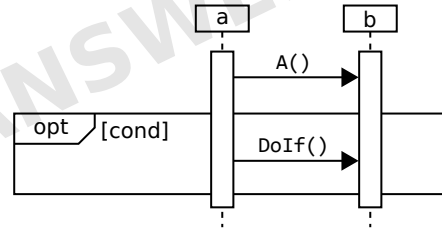
Use an interaction frame with the loop operator. Separate branches with dotted lines. Supply loop condition in [] statements.



ANSWER

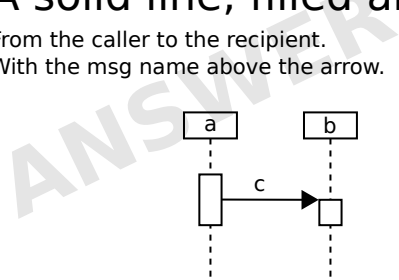
A conditional (aka, if statement)

Use an interaction frame with the **opt** operator. Separate branches with dotted lines. Supply if condition with [] statements.



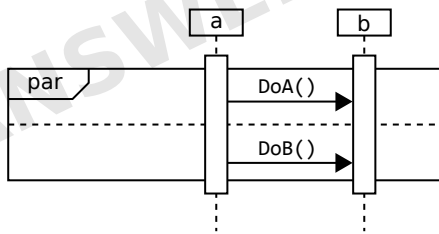
A solid line, filled arrow.

From the caller to the recipient. With the msg name above the arrow.



Dashed lines stemming from a participant.

Use an interaction frame with the **par** operator. Separate branches with dotted lines.



ANSWER

A "message"

As a box with its name inside, and a dashed line stemmed below.

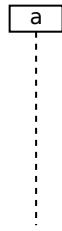


ANSWER

Parallelism

In a sequence diagram,

What is a named box with a dotted vertical line called?



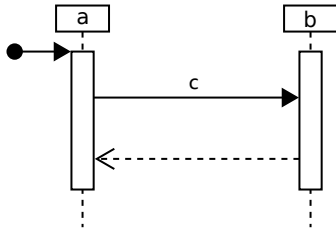
UML

In a sequence diagram,

how are **return values** drawn?

UML

What is the dashed arrow?

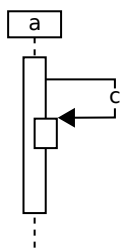


UML

In a sequence diagram,

how are **self-calls** drawn?

UML



What is c?

UML

In a sequence diagram,

how are temporary created objects drawn?

UML

What is a sequence diagram?

UML

In a sequence diagram,

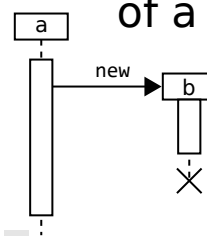
how is **branching** drawn?

UML

In a sequence diagram,
how is the **self-deletion**
of temporary created
objects drawn?

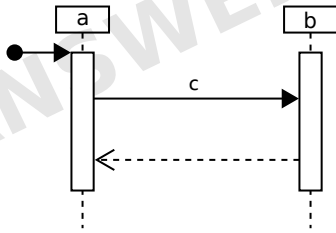
UML

What does the X at the end
of a lifeline mean?



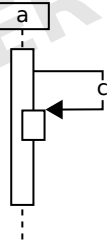
UML

Dashed lines, open arrow.



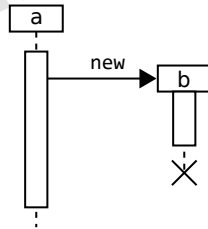
A "participant"

A call arrow pointing to itself.



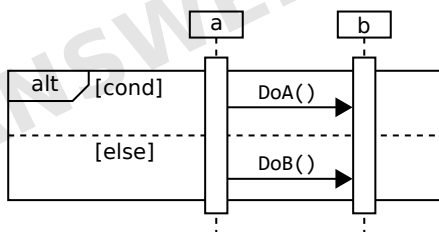
A return value.

An arrow points to the title upon creation. And the lifeline ends with an X.



A self-call

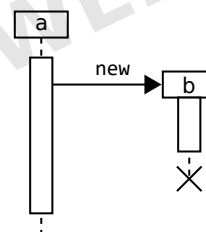
Use an interaction frame with the **alt** operator. Separate branches with dotted lines. Supply if condition with [] statements.



A diagram showing the order of how multiple participants communicate to perform a task or respond to an event.

The **self-deletion** of the temporary object.

Lifeline extends to the end with an X.



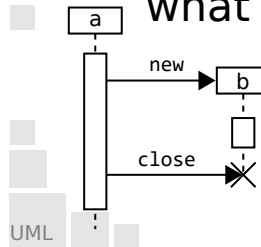
In a sequence diagram,
how is the **deletion** of
temporary created
objects drawn?

UML

In a sequence diagram,
how is the duration of
participation shown?

UML

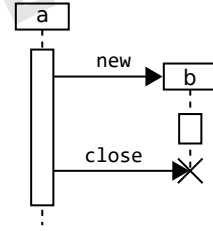
For a temporary object,
what does a message
to an X mean?



ANSWER

Deletion of
a temporary object.

A participant
sends a close
message to the
X at the end of
the lifeline.



With activation boxes.

A hollow box on the
lifeline for the bounds
where relevant.

